



# RMK SENIOR SECONDARY SCHOOL

Affiliated to CBSE, New Delhi, Affiliation No. 1930275

*Proudly Presents*



## CREA CULTURALS

THINK BEYOND YOUR IMAGINATION

ON THURSDAY

24<sup>th</sup> AUGUST 2023



## SCHEDULE

### CLASS - 9-12

EVENT	TIME
NRITYA	09.30 - 10.30am
SET THE TUNE	09.30 - 10.30am
SELL IT	10.00 - 11.00am
TITANIC	10.00 - 11.00am
ZOOM OUT	09.30 - 10.30am

### CLASS - 6-8

EVENT	TIME
FRESH FLAVOUR	09.30 - 10.30am
POSTER DESIGNING	09.30 - 10.30am
BLAST THE FLOOR	10.30 - 11.30am
VEGETABLE CARVING	10.00 - 11.00am
QUILLING MANIA	10.00 - 11.00am

### CLASS - 3-5

EVENT	TIME
LET'S NACHO	11.00 - 12.00pm
JUNK ART	10.00 - 11.00am
Sa Re Ga Ma Pa	11.00 - 12.00pm
KRISHNA-KA-MATKA	10.00 - 11.00am

### CLASS - 1-2

EVENT	TIME
SHOW AND TELL	09.30 - 10.30am
SEASON FASHION	09.30 - 10.30am
TUNI-TOONS	09.30 - 10.30am
THIRUKKURAL RECITATION	10.00 - 11.00am

### CLASS - UKG

EVENT	TIME
FO-FO PHONIC	09.30 - 10.30am
STORY TELLING	09.30 - 10.30am
CLAY MOULDING	09.30 - 10.30am

### CLASS - LKG

EVENT	TIME
COLOURING	09.30 - 10.30am
RHYMES	09.30 - 10.30am
CLAY MOULDING	09.30 - 10.30am

## GENERAL RULES AND REGULATIONS

- » Schools are requested to fill out the registration form on or before 20th August 2023.
- » A student is allowed to participate only in a event.
- » Participants are requested to come in their school uniform (except group dance and adaptune) with their ID cards and bonafide certificate.
- » Green rooms will not be provided. Participants will have to get dressed and come for the event.
- » Participants must be accompanied by their teacher coordinator on the day of event.
- » All participants are instructed to strictly adhere to the time limit mentioned for each event.
- » Decision of the judges will be final and irrevocable.
- » The management will not be responsible for theft or damage of any personal belongings.
- » Any damage to school property will lead to disqualification with penalty.
- » Participants should not litter the campus and are expected to utilise the dustbins provided.

## NRITYA

(SEMI CLASSICAL)

### TIMINGS: 9.30am-10.30am

No. of Participants: 6-8 students per team  
No. of entries per school: 01  
Duration: 3-5 minutes  
Theme: Goddess of Hindu mythology

### RULES:

The genre of the performance: Any Semi-classical dance form of India.  
The song required for the performance must be brought in a USB flash drive and must also be in mp3 format.  
Usage of props and creativity in choreography will be appreciated.  
Movie songs/ Title tracks are strictly not allowed.



### CRITERIA OF JUDGEMENT

Adherence to theme, choreography, costume and properties, coordination, presentation.

## SET THE TUNE

(MUSIC BAND)

### TIMINGS: 9.30am-10.30am

No. of participants per team: 6-8 (inclusive of instrumentalists)  
No. of entries per school: 01  
Duration: 3-5 minutes.  
Preparation : 2 Minutes

### RULES:

Students can perform a medley/mashup of two or more songs.  
Choice of songs should be in English, Tamil or Hindi only.  
Participating schools must bring their own instruments.  
Participants must clear the stage immediately after their performance.



## SELL IT

(ADZAP)

### TIMINGS: 10.00am - 11.00am

No. of participants per team: 4  
No. of entries per school: 1  
Duration: 2-3 minutes  
Preparation : 2 minutes

### RULES:

Participants will be given a product to sell on spot.  
After the act, the participants should answer the questions asked by the judges.  
Use of unparliamentary words will lead to disqualification.



### CRITERIA OF JUDGEMENT

Humour, Creativity, Marketing Skills.

## TITANIC

(SHIPWRECK)

### TIMINGS: 10.00am - 11.00am

Duration: 2-3 Minutes  
No. of participants per team: 1  
No. of entries per school: 1  
Preparation time: 30 seconds

### RULES:

On a sinking ship, there is only one life jacket.  
Participants will be given a character on spot.  
Participants will have to explain to their captain (judges) why they deserve the life jacket and also to survive.  
The participants must speak only in English.

### CRITERIA OF JUDGEMENT

Content, Spontaneity, Convincing Skills, Adaptability, Creativity



## ZOOM OUT

(PHOTOGRAPHY)

**TIMINGS: 9.30am-10.30am**  
No. of participants per team:2  
No. of entries per school:01

**RULES:**  
The participants should bring their own gadgets. By 10.30 am PPT/video containing the photographs of CREA 2023 has to be submitted to the judges. The team with the best PPT/video will be declared the winner.



## FRESH FLAVOUR

(COOKING WITHOUT FIRE)

**TIMINGS: 9.30am-10.30am**  
No. of Participant: Individual  
No. of entries per school:02  
Duration: 90 minutes  
Theme - Healthy snacks

**RULES:**  
Participants should bring all the ingredients required for cooking and are supposed to display a chart having the name, ingredients and nutritional value of each dish. Dishes should be purely vegetarian. They should not bring any cut, chopped or grated raw materials or pre-cooked items. They should process it on the spot within allotted time.

**CRITERIA OF JUDGEMENT**  
Presentation, Variety in ingredients, Nutritional value



## POSTER DESIGNING

**TIMINGS: 9.30am-10.30am**  
Duration:45minutes  
Theme: SAVE WILD LIFE  
No. of participant: Individual  
No. of entries per school: 02

**RULES:**  
Participants must carry their art materials on their own. Poster must be made on the A3 size sheet. Can use pencil,crayons,sketch,paste,water colour,poster colour etc., Theme should be the focus of the poster.

**CRITERIA OF JUDGEMENT**  
Adherence to theme, Creativity, Clarity, Message of poster & Presentation.



## BLAST THE FLOOR

(ADAPTUNE)

**TIMINGS: 10.30am-11.30am**  
Duration: 2-3 minutes  
No. of entries per school: 01

**RULES:**  
Music of any genre will be played. The participant should adapt to the tune and groove. Proper apparel is allowed.

**CRITERIA OF JUDGEMENT**  
Grace, Expressions and Moves





## VEGETABLE CARVING

### TIMINGS: 9.30am-10.30am

Duration: 45minutes  
No. of entries per school:02  
Theme: Tricolour(saffron,white,green).

### RULES:

Necessary materials to be brought by the participants.



### CRITERIA OF JUDGEMENT

Neatness in presentation, Creativity Artistry, Full utilization of the raw materials

## QUILLING MANIA

### TIMINGS: 10.00-11.00am

Duration: 45minutes  
No. of entries per school:02  
Theme: Birthday card for my Buddy

### RULES:

Participants should bring their quilling paper and other required materials.



### CRITERIA OF JUDGEMENT

ColourScheme, Aesthetic appeal, Presentation & creativity.

## LET'S NACHO

(GROUP DANCE)

### Timings: 11.00am-12.00pm

Duration: 4-5 minutes  
Theme: festivals (folk dance)  
No. of participants  
per group: 5-8 members  
No. of entries per school: 01

### RULES:

Participants are allowed to dance to songs without any lyrics (only karaoke).  
The teams are required to adhere to the theme. Proper apparel is allowed.  
The music must be sent to the official mail ID.



### CRITERIA OF JUDGEMENT

Adherence to theme, choreography, costume and properties, coordination, presentation.

## JUNK ART

(BEST OUT OF WASTE)

### TIMINGS: 10.00am-11.00am

Duration: 1 hour  
Theme: Nature  
No. of Participant: Individual  
No. of entries per school: 02

### RULES:

Participants must carry their required materials on their own.



### CRITERIA OF JUDGEMENT

Adherence to theme, creativity, clarity, Message of poster & Presentation.

## SA RE GA MA PA

(GROUP SINGING)

**Timings: 11.00am-12.00pm**

Duration:3-5 minutes

Theme: Devotional song

No. of Participant:6-8

No. of entries per school:01

**RULES:**

Participants will not be allowed to refer lyrics.

Participants will not be allowed to exceed time limit.

Tracks can be in any language.

Participants may bring their own musical instruments or they may bring their Karaoke in a labelled Pen-Drive.



### CRITERIA OF JUDGEMENT

Diction, Synchronisation and Presentation

## KRISHNA -KA- MATKA

(POT DESIGNING)

**TIMINGS: 10.00am-11.00am**

Duration: 1 hour

Theme of their own.

No. of Participant: Individual

No. of entries per school: 02

**RULES:**

Participants must carry the required materials on their own like pot, acrylic or poster colours, glue, chamki etc..



### CRITERIA OF JUDGEMENT

Colour Scheme ,Creativity and Visual Presentation.

## SHOW AND TELL

**TIMINGS: 9.30am-10.30am**

Duration:3-5 minutes

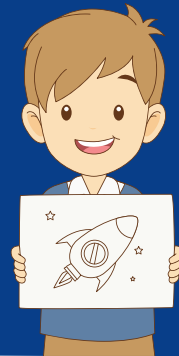
Theme: Transport

No. of Participant: Individual

No. of entries per school: 02

**RULES:**

Participants must carry their required materials on their own.



### CRITERIA OF JUDGEMENT

Content, relevance, fluency, pronunciation and presentation.

## SEASON FASHION

(FANCY DRESS)

**TIMINGS: 9.30am-10.30am**

Duration:3minutes

Theme: Fairy tales

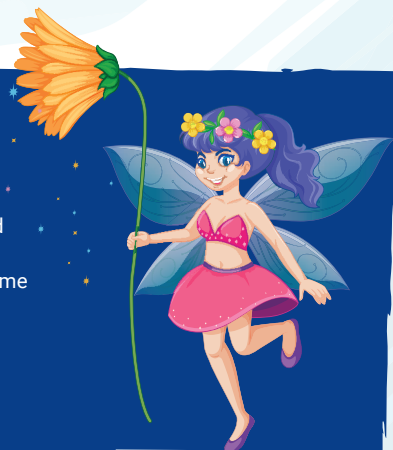
No. of Participant: Individual

No. of entries per school: 02

**RULES:**

The participant should dress up and speak based on the theme.

Participant should not exceed the time limit on stage.



### CRITERIA OF JUDGEMENT

Content, relevance, fluency, Costume and presentation.

## TUNI-TOONS

(DRAWING AND COLOURING)

### TIMINGS: 9.30am-10.30am

Duration:3-5 minutes

THEME :My Favourite Cartoon

No. of Participant: Individual

No. of entries per school: 02

Medium: Oil Pastels

### RULES:

Chart Paper will be provided.

Drawing and colouring materials must be brought.



### CRITERIA OF JUDGEMENT

Adherence to theme, neatness,Colour Scheme and presentation.

## THIRUKKURAL RECITATION

### TIMINGS: 10.00am-11.00am

Duration:2-3 minutes

Theme :Kalvi

No. of Participant: Individual

No. of entries per school: 02

### RULES:

Participants must recite 10 thirukurals within given time.



### CRITERIA OF JUDGEMENT

Pronunciation,clarity and completion time

## FO-FO PHONIC

### TIMINGS: 9.30am-10.30am

Duration:1 minute

No.of Participant: Individual

No.of entries per school: 02

### RULES:

Participant must interpret the shown flash cards.



### CRITERIA OF JUDGEMENT

Phonic sound clarity, correct blending

## STORY TELLING

### TIMINGS: 9.30-10.30am

Duration:3-5minutes

No. of Participant: Individual

No. of entries per school: 02

THEME: Animals

### RULES:

The story should not exceed the time limit



### CRITERIA OF JUDGEMENT

Content,Pronunciation,Props and Voice modulation

## CLAY MOULDING

### TIMINGS: 9.30am-10.30am

Duration:10 minutes  
No.of Participant: Individual  
No.of entries per school: 02  
THEME: Open Topic

### RULES:

Participant must bring all the required materials on their own.  
Bring the base card for presentation.  
Can use any tools to create your model.

### CRITERIA OF JUDGEMENT

Presentation,creativity,neatness.



## COLOURING

### TIMINGS: 9.30am-10.30am

Duration:20 minutes  
No. of Participant: Individual  
No. of entries per school: 02  
THEME: fruits

### RULES:

Colouring sheet will be provided.  
Participant must bring all colouring materials on their own.

### CRITERIA OF JUDGEMENT

Presentation,colourcombination,completion.



## RHYMES

### TIMINGS: 9.30am-10.30am

Duration:2-3 minutes  
No. of Participant: Individual  
No. of entries per school: 02  
THEME: Cleanliness

### RULES:

Rhymes can be recited either in English/Tamil/Hindi.  
Participant must stick to the theme.

### CRITERIA OF JUDGEMENT

Rhythm, Clarity in pronunciation, Action



## CONTACT US TEACHER COORDINATORS

KG	MS.THILAKAVATHY	7358570758
1-5	MS.SHANTHI	9940053332
6-8	MS.SRIDEVI	9500156170
9-12	MS.SIREESHA	9382886575